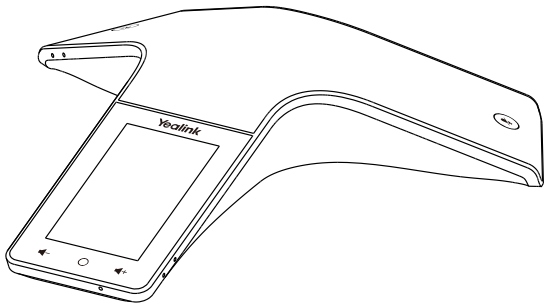
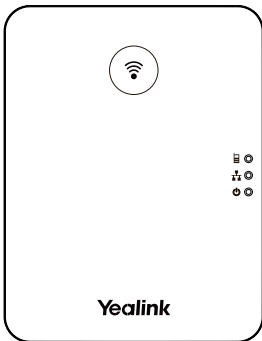
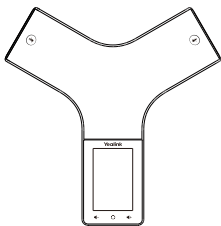


Yealink

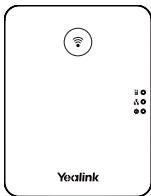
HD Wireless Conference Phone CP935W-Base



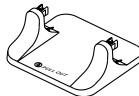
CP935W-Base Package Contents



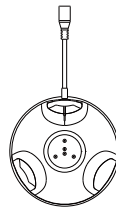
CP935W



W70B Base Station



Base Stand



Charging Cradle



2 Power Adapters



Quick Start Guide



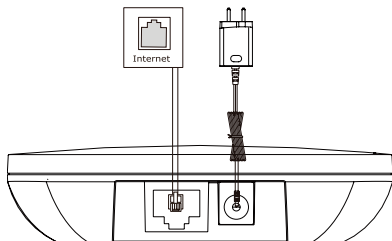
Ethernet Cable

Note: One power adapter (5V/0.6A) is for W70B base station, the other one (12V/1.25A) is for CP935W.

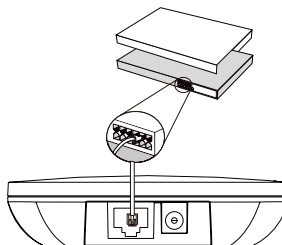
Assembling the DECT Phone

1. Connect the base station power and the network using method a or method b.

a. AC Power Option



b. PoE (Power Over Ethernet) Option

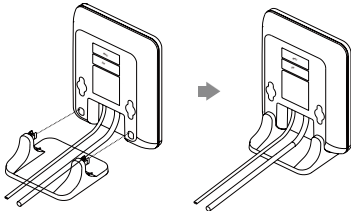


Note:

- If you choose method a, use Yealink-supplied power adapter (5V/0.6A). A third-party power adapter may damage the base station.
- If you choose method b, you do not need to connect the power adapter. Make sure the hub/switch is PoE-compliant.

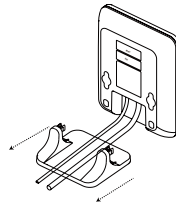
2a. (Desktop Installation) Attach and remove the base stand.

Attach the Base Stand



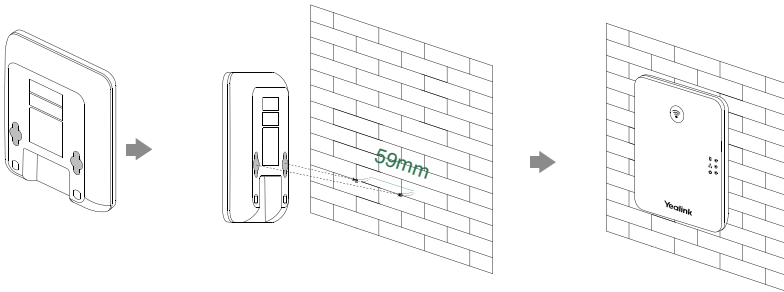
Align the snap-fits with the corresponding holes and push forward, snapping them into the holes.

Remove the Base Stand

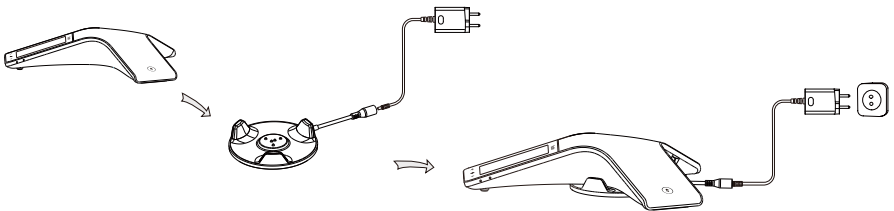


Remove the snap-fits from the holes horizontally.

2b. (Wall-Mount Installation) Attach the base station.



Charging the CP935W

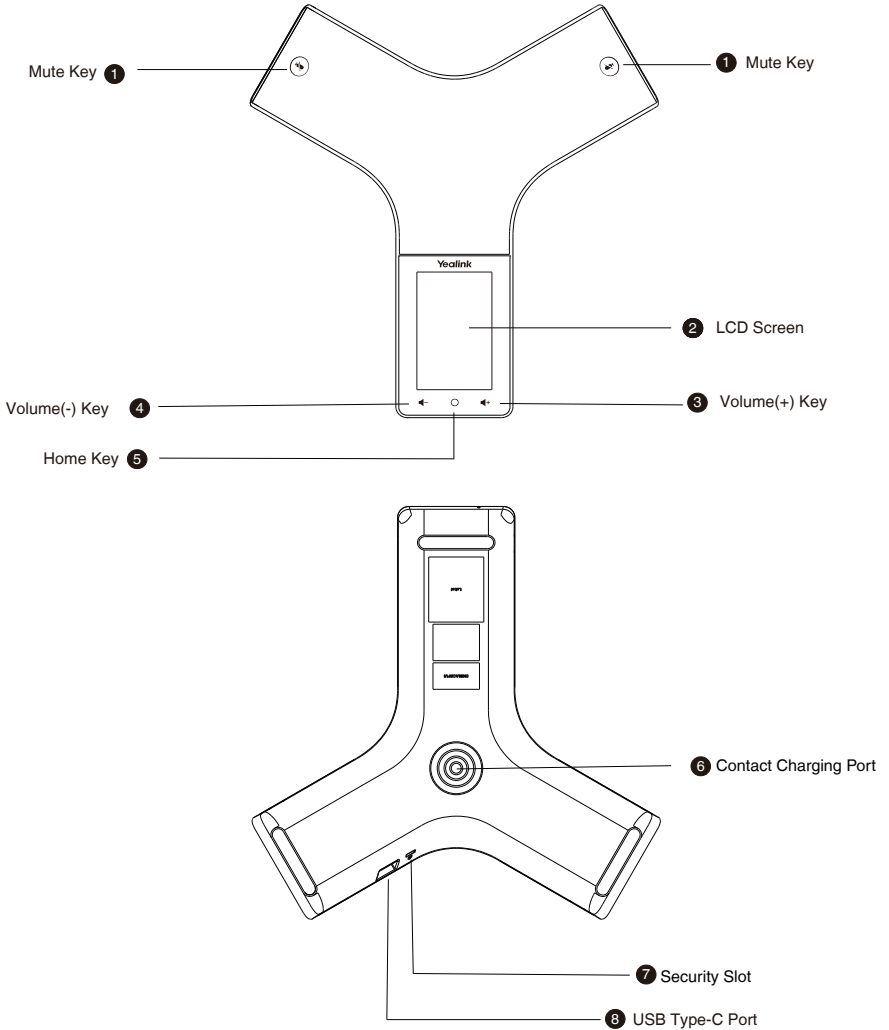


Note:

- Use Yealink-supplied power adapter (12V/1.25A). A third-party power adapter may damage the wireless conference phone.
- Check the charging status in the upper-left corner of the LCD screen.

Getting Started

Hardware Overview




Power on/off the CP935W

Power on: Press the home key for 3 seconds or charge the CP935W.

Power off: Press the home key for 10 seconds then tap **OK** or tap **More->Basic->Power Off->OK** on the LCD screen of the CP935W.

Registration

You can register up to 10 CP935W to one W70B base station. Each CP935W can only be registered to one base station.

When the CP935W LCD screen prompts “Unregistered!”, long press  on the base station till the registration LED indicator flashes. There are two methods to register a new CP935W:

Easy Registration:

1. Tap **Reg** on the CP935W screen to register quickly.

Normal Registration:

1. Tap **More->Basic->Registration->Register** on the LCD screen of the CP935W. The CP935W begins searching the base station.
2. Tap **OK** after searching a base station successfully (if it's not the base which you want to register to, tap **Next** to search another base).
3. Enter the base station password (default: 0000), and then tap **OK** to complete the registration.

Note:

- If the CP935W is registered to the base station successfully, the LCD screen prompts “Subscribe Succeeded”.
- If the CP935W LCD screen prompts “Searching for Base”, check whether the registration LED indicator of your base station flashes.

Account Settings

Before you start using the CP935W, please set up your account via web user interface of the base station. Follow the steps below:

1. Tap **More->Status->Base Status->IPv4** on the LCD screen of the CP935W and access the IP address with a browser (the default username and password are admin).
2. Go to **Account->Register**, select the account, enable **Active Line**, enter account information and click **Confirm**.

If you don't know the server account, please contact the administrator to obtain the information.

Note:

When you enter the account information, the Display Name, Register Name, Username and Server Host are required.

Local Conference

You can host a five-way conference with up to other four parties.

To create a five-way local conference:

1. Tap **Call**, enter the number of the second party and call out. You can also select a contact from **Directory** to invite them to join the conference.
2. Tap **Conference** when the second party answers then enter the number of the third party.
3. Repeat step 2 to invite more parties to the conference.
4. Tap **More->merge calls** then you can start the multi-party conference.

If you connect to a mobile phone via Bluetooth and connect to PC via Type-C, you can also create a hybrid UC conference.

Upgrade Firmware

For a better experience, please go to the Yealink's official website to download the latest firmware, then upgrade the base station and CP935W.

1. Tap **More->Status->Base Status->IPv4 IP** on the screen of the CP935W and access the IP address with a browser (the default username and password are admin).
2. Go to **Settings->Upgrade**, you can upgrade the base station and the CP935W that registered to the base station.

If one of the CP935W is not upgraded successfully, tap **More->Basic->upgrade Firmware** on the screen of the CP935W, you can check the new firmware and upgrade the CP935W separately (make sure the provision server is configured).

Switch Mode

When the CP935W is powered on for the first time or reset to factory setting, the system defaults to DECT mode, if you want to switch to Wi-Fi mode, tap **More->Basic->Phone Mode** on the screen of the CP935W. For more information about Wi-Fi mode, please refer to the **Yealink CP935W User Guide**.

Regulatory Notices

Operating Ambient Temperatures


- Operating temperature: +32 to 104°F (0 to 40°C)
- Relative humidity: 5% to 90%, noncondensing
- Storage temperature: -22 to +160°F (-30 to +70°C)

Warranty

Our product warranty is limited only to the unit itself, when used normally in accordance with the operating instructions and the system environment. We are not liable for damage or loss resulting from the use of this product, or for any claim from a third party. We are not liable for problems with Yealink device arising from the use of this product; we are not liable for financial damages, lost profits, claims from third parties, etc., arising from the use of this product.

Explanation of the symbols

- DC symbol
- is the DC voltage symbol.
- WEEE Warning symbol

 To avoid the potential effects on the environment and human health as a result of the presence of hazardous substances in electrical and electronic equipment, end users of electrical and electronic equipment should understand the meaning of the crossed-out wheeled bin symbol. Do not dispose of WEEE as unsorted municipal waste and have to collect such WEEE separately.

Restriction of Hazardous Substances Directive (RoHS)

All adapter devices comply with the requirements of the EU RoHS Directive. Statements of compliance can be obtained by contacting support@yealink.com.

Safety Instructions

Save these instructions. Read these safety instructions before use!

General Requirements

- Before you install and use the device, read the safety instructions carefully and observe the situation during operation.
- During the process of storage, transportation, and operation, please always keep the device dry and clean, avoid collision and crash.
- Please attempt not to dismantle the device by yourself. In case of any discrepancy, please contact the appointed maintenance center for repair.
- Please refer to the relevant laws and statutes while using the device. Legal rights of others should be respected as well.

Environmental Requirements

- Place the device at a well-ventilated place. Do not expose the device under direct sunlight.
- Keep the device dry and free of dusts.
- Do not place the device on or near any inflammable or fire-vulnerable object, such as rubber-made materials.
- Keep the device away from any heat source or bare fire, such as a candle or an electric heater.

Operating Requirements

- Do not let a child operate the device without guidance.
- Do not let a child play with the device or any accessory in case of accidental swallowing.
- Please use the accessories provided or authorized by the manufacturer only.
- The power supply of the device shall meet the requirements of the input voltage of the device. Please use the provided surge protection power socket only.
- Before plugging or unplugging any cable, make sure that your hands are completely dry.
- Do not spill liquid of any kind on the product or use the equipment near water, for example, near a bathtub, washbowl, kitchen sink, wet basement or near a swimming pool.
- During a thunderstorm, stop using the device and disconnect it from the power supply. Unplug the power plug and the Asymmetric Digital Subscriber Line (ADSL) twisted pair (the radio frequency cable) to avoid lightning strike.
- If the device is left unused for a rather long time, disconnect it from the power supply and unplug the power plug.
- When there is smoke emitted from the device, or some abnormal noise or smell, disconnect the device from the power supply, and unplug the power plug immediately.
- Contact the specified maintenance center for repair.
- Do not insert any object into equipment slots that is not part of the product or auxiliary product.
- Before connecting a cable, connect the grounding cable of the device first.

Do not disconnect the grounding cable until you disconnect all other cables.

Battery Requirements

- Do not immerse the battery into water, which could short-circuit and damage the battery.
- Do not expose the battery to an open flame or leave the battery where it could be subjected to extremely high temperatures, which could cause the battery to explode.
- Do power the handset off before removing the battery.
- Do not try to use the battery for the power supply of any device other than this handset.
- Do not open or mutilate the battery, released electrolyte is corrosive and may cause damage to the your eyes or skin.
- Use only the rechargeable battery pack delivered with the handset or those rechargeable battery packs expressly recommended by Yealink.
Defective or exhausted battery should never be disposed of as municipal waste. Return old battery to the battery supplier, a licensed battery dealer or a designated collection facility.

Cleaning Requirements

- Before cleaning the device, disconnect it from the power supply.
- Use a piece of soft, dry and anti-static cloth to clean the device.
- Keep the power plug clean and dry.

Troubleshooting

The unit cannot supply power to device other than Yealink device.

There is a bad connection with the plug.

1. Clean the plug with a dry cloth.

2. Connect it to another wall outlet.

The usage environment is out of operating temperature range.

1. Use in the operating temperature range.

The cable between the unit and the Yealink device is connected incorrectly.

1. Connect the cable correctly.

You cannot connect the cable properly.

1. You may have connected a wrong Yealink device.

2. Use the correct power supply.

Some dust, etc., may be in the port.

1. Clean the port.

Contact your dealer or authorized service facility for any further questions.

FCC Statement

This device complies with part 15 of the FCC Rules. Operation is subject to the following two conditions: (1) this device may not cause harmful interference, and (2) this device must accept any interference received, including interference that may cause undesired operation.

Any Changes or modifications not expressly approved by the party responsible for compliance could void the user's authority to operate the equipment.

IC Statement

This device complies with Industry Canada's licence-exempt RSSs. Operation is subject to the following two conditions:

(1) this device may not cause interference; and

(2) this device must accept any interference, including interference that may cause undesired operation of the device. CAN ICES-3(B)

Le présent appareil est conforme aux CNR d'Industrie Canada applicables aux appareils radio exempts de licence. L'exploitation est autorisée aux deux conditions suivantes :

(1) l'appareil ne doit pas produire de brouillage;

(2) l'utilisateur de l'appareil doit accepter tout brouillage radioélectrique subi, même si le brouillage est susceptible d'en compromettre le fonctionnement. NMB-3(B)

Radiation Exposure Statement

This equipment complies with FCC and IC radiation exposure limits set forth for an uncontrolled environment. This equipment should be installed and operated with minimum distance 20cm between the radiator and your body.

Cet émetteur ne doit pas être Co-placé ou ne fonctionnant en même temps qu'aucune autre antenne ou émetteur. Cet équipement devrait être installé et actionné avec une distance minimum de 20 centimètres entre le radiateur et votre corps.

Contact Information

YEALINK NETWORK TECHNOLOGY CO.,LTD.

309, 3rd Floor, No.16, Yun Ding North Road, Huli District, Xiamen City, Fujian, P.R. China

YEALINK (EUROPE) NETWORK TECHNOLOGY B.V.

Strawinskylaan 3127, Atrium Building, 8th floor, 1077XZ Amsterdam, The Netherlands

YEALINK (USA) NETWORK TECHNOLOGY CO., LTD.

999 Peachtree Street Suite 2300, Fulton, Atlanta, GA, 30309, USA
Made in China

About Yealink

Yealink (Stock Code: 300628) is a global brand that specializes in video conferencing, voice communications and collaboration solutions with best-in-class quality, innovative technology and user-friendly experience. As one of the best providers in more than 140 countries and regions, Yealink ranks No.1 in the global market share of SIP phone shipments (Global IP Desktop Phone Growth Excellence Leadership Award Report, Frost & Sullivan, 2019).

Copyright

Copyright © 2021 YEALINK(XIAMEN) NETWORK TECHNOLOGY CO., LTD.

All rights reserved. No parts of this publication may be reproduced or transmitted in any form or by any means, electronic or mechanical, photocopying, recording, or otherwise, for any purpose, without the express written permission of Yealink(Xiamen) Network Technology CO., LTD.

Technical Support

Visit Yealink WIKI (<http://support.yealink.com/>) for firmware downloads, product documents, FAQ, and more. For better service, we sincerely recommend you to use Yealink Ticketing system (<https://ticket.yealink.com>) to submit all your technical issues.



430104001751

YEALINK(XIAMEN) NETWORK TECHNOLOGY CO.,LTD.

Web: www.yealink.com

Addr: No.1 Ling-Xia North Road, High Tech Park,
Huli District, Xiamen, Fujian, P.R.C

Copyright©2021 Yealink Inc. All rights reserved.